

- Project Facilities**
- Powerhouse
 - Dam
 - Tunnel
 - Penstock
- Transportation**
- Major Highway
 - Minor Highway
- Hydrography**
- Watercourse with river miles (5 mi. increments)
 - Water Body
 - Middle Fork American River Watershed*
 - Inaccessible Stream Segment

- Study Site Locations**
- PCWA Benthic and Drift Macroinvertebrate Study Site
 - PCWA Benthic Macroinvertebrate Study Site
 - PCWA Drift Macroinvertebrate Study Site
 - Ralston Afterbay Sediment Management Project Monitoring Sites (CSBP)**
 - Forest Service Monitoring Site***

**These sites were sampled using the California Stream Bioassessment Procedure (CSBP). All other sites sampled in 2007 used the current Surface Water Ambient Monitoring Program (SWAMP) protocol (see text for a discussion of sampling procedures).

***Prior to 2007, these sites were sampled using the California Stream Bioassessment Procedure (CSBP). In 2007, the Surface Water Ambient Monitoring Program (SWAMP) protocol was used (see text for a discussion of sampling procedures).

PCWA

Placer County Water Agency
Middle Fork American River Project

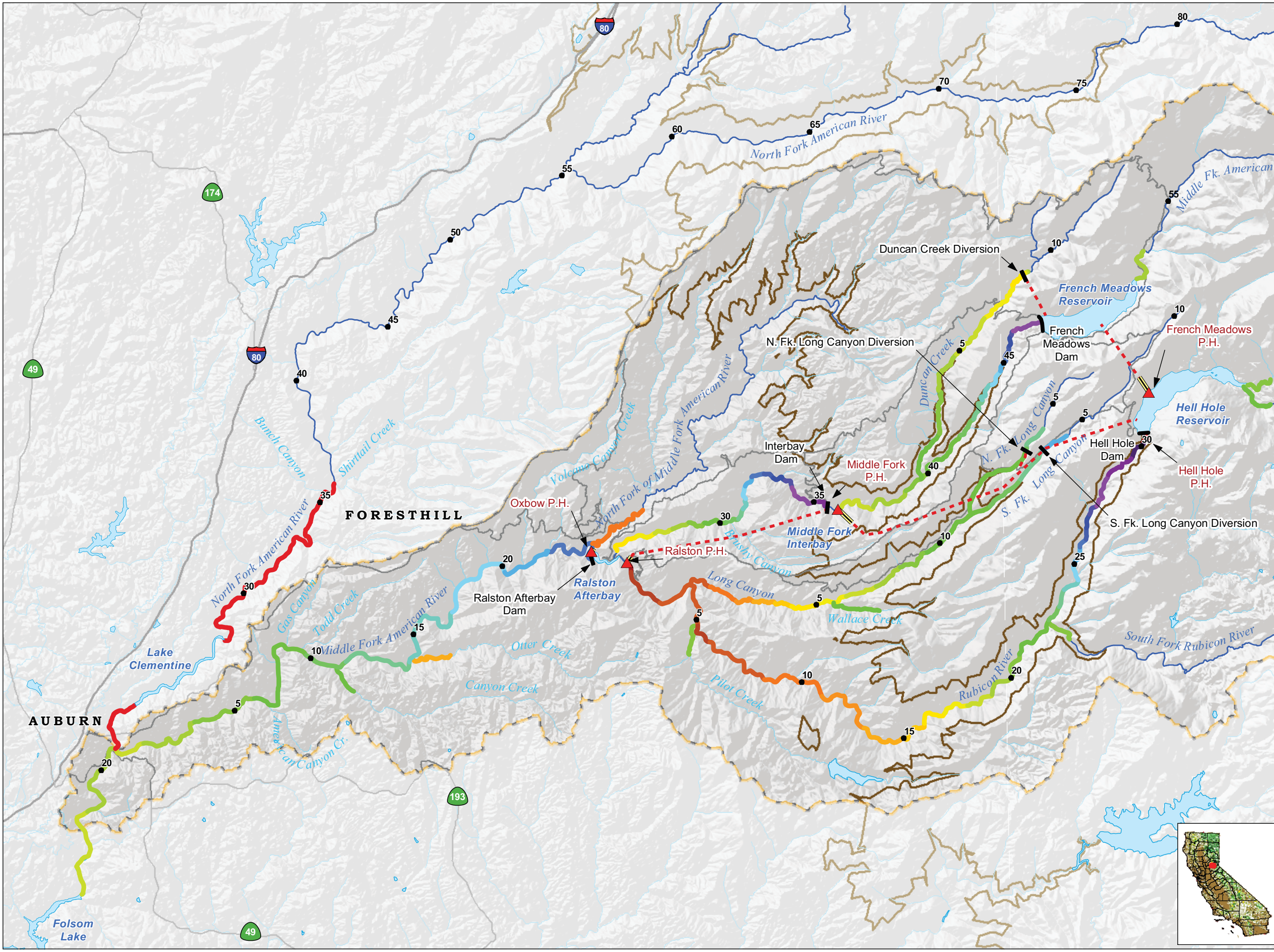
Map AQ 3-1

Macroinvertebrate Sampling Sites

0 1 2 3 Miles

Projection: CA State Plane, Zone 2
Datum: NAD 83

Date: 4/24/08



Project Facilities

- ▲ Powerhouse
- Dam
- - - Tunnel
- === Penstock

Transportation

- Major Highway
- Minor Highway

Hydrography

- Watercourse with river miles (5 mi. increments)
- Water Body
- Middle Fork American River Watershed*

*Modified from Calwater Ver. 2.2 to represent drainage above high-water mark of Folsom Lake

— Inaccessible Stream Segments

Hypsography

- 4500' Elevation

Average Water Temperature August 2007

- 45 F
- 50 F
- 55 F
- 60 F
- 65 F
- 70 F
- 74 F

PCWA
Placer County Water Agency
Middle Fork American River Project

Map AQ 3-2
Average Water Temperatures in Study Streams August 2007

0 1 2 3 Miles

Projection: CA State Plane, Zone 2
Datum: NAD 83

Date: 12/13/2007